



LOWER RIO GRANDE
Public Water Works Authority

PO Box 2646 Anthony, New Mexico 88021 (575) 233-5742

www.LRGauthority.org

Sign In Sheet

Page 1 of 1

Date: May 25, 2023

Time: 10:00 a.m.

Places: Zia Zoom

Event: Special Board Meeting

SIGNATURE	Print Name, Title, Company	Phone Number	Email Address
Via zoom	Martin Lopez LRG General Manager	575-233-5742 Ext. 1004	martin.lopez@lrgauthority.org
Via zoom	Karen Nichols LRG Projects Manager	575-233-5742 Ext. 1018	karen.nichols@lrgauthority.org
Via zoom	Patricia Charles LRG Projects Special.	575-233-5742 Ext. 1021	patty.charles@lrgauthority.org
Via zoom	Kathi Jackson LRG Finance Manager	575-233-5742 Ext. 1005	kathi.jackson@lrgauthority.org
Via zoom	John Schroder LRG Accounting Assistant	575-233-5742 Ext. 1006	john.schroder@lrgauthority.org
	Mike Lopez LRG Operations Manager	575-233-5742 Ext. 1011	mike.lopez@lrgauthority.org
Via zoom	Espy Holguin LRG Board Chair	575-644-9543	Espy.holguin@lrgauthority.org
Via zoom	Furman Smith LRG Board Vice Chair	575-382-5982	furman.smith@lrgauthority.org
Via zoom	James Cadena LRG Board Director	480-206-5930	James.cadena@lrgauthority.org
	Glory Juarez LRG Board Director	575-494-2750	glory.juarez@lrgauthority.org
	Josh Smith LRG Attorney	575-528-0500	
Via zoom	<i>Tyler Hopkins Behennan Huston</i>		

LOWER RIO GRANDE PUBLIC WATER WORKS AUTHORITY

Draft Minutes —SPECIAL BOARD OF DIRECTORS MEETING

10:00 a.m., Thursday May 25, 2022 online - Zoom

Contact us at 575-233-5742 or board@LRGauthority.org for information, assistance, online meeting link, or to subscribe to email board meeting reminders. Email the board address or dial extension 1021 or 1018 and leave a message if requesting phone or log-in information for online meetings. Agendas are final 72 hours prior to the meeting and may be obtained at any LRGPWVA Office or at www.LRGauthority.org/noticesavisos.html

Join Zoom Meeting <https://us02web.zoom.us/j/86110615705?pwd=YkQwR2V6eU0zSEVsWnlwR0h1Y2ZqZz09>

Meeting ID: 861 1061 5705 Passcode: 550807 or call in: 719 359 4580

- I. **Call to Order, Roll Call to Establish Quorum:** Mrs. Holguin called the meeting to order at 10:11 a.m. District #1 is Vacant, District #2 is Vacant, Mr. Cadena representing District #3 was present via telephone, Mrs. Holguin representing District #4 was present, District # 5 is Vacant, Mrs. Juarez representing District #6 was absent, Mr. F. Smith representing District #7 was present. Staff present were General Manager Martin Lopez, Projects Manager Karen Nichols, Projects Specialist Patricia Charles, Accounting Assistant John Schroder, Finance Manager Kathi Jackson and Tyler Hopkins from Bohannon Huston.
- II. **Motion to approve the agenda:** Mr. Smith made the motion to approve the agenda and Mr. Cadena seconded the motion, the motion passed with all in favor.
- III. **New Business:**
 - A. **Motion to approve the RFP Committee recommendation and a select an engineering firm for the Mesquite-Brazito Sewer Project:** Ms. Nichols said we received 1 proposal for this project. The committee has recommended selecting Bohannon Huston. Mr. Smith made the motion to approve the RFP committee recommendation and selecting Bohannon Huston for the Mesquite-Brazito Sewer Project. Mr. Cadena seconded the motion, the motion passed with all in favor.
- IV. **Motion to Adjourn:** Mr. Smith made the motion to adjourn the meeting at 10:15 a.m. Mr. Cadena seconded the motion.

These minutes will be presented to the board for approval on the 21st Day of June, 2023 at a regular meeting of the Board of Directors:

SEAL:

Esperanza Holguin, Board Chair

Attest:

Glory Juarez, Secretary

LOWER RIO GRANDE PUBLIC WATER WORKS AUTHORITY

Meeting Notice & Agenda—SPECIAL BOARD OF DIRECTORS MEETING

10:00 p.m., Thursday May 25, 2022 online - Zoom

Contact us at 575-233-5742 or board@LRGauthority.org for information, assistance, online meeting link, or to subscribe to email board meeting reminders. Email the board address or dial extension 1021 or 1018 and leave a message if requesting phone or log-in information for online meetings. Agendas are final 72 hours prior to the meeting and may be obtained at any LRGPWVA Office or at www.LRGauthority.org/noticesavisos.html

Join Zoom Meeting <https://us02web.zoom.us/j/86110615705?pwd=YkQwR2V6eU0zSEVsWnlwR0h1Y2ZqZz09> Meeting ID: 861 1061 5705 Passcode: 550807 or call in: 719 359 4580

- I. Call to Order, Roll Call to Establish Quorum: Vacant _____ (District #1), Vacant (District #2), Mr. Cadena _____ (District #3), Mrs. Holguin _____ (District #4), Vacant (District # 5), Mrs. Juarez _____ (District #6), Mr. F. Smith _____ (District #7)
- II. Motion to approve the Agenda
- III. New Business
 - A. Motion to approve the RFP Committee recommendation and a select an engineering firm for the Mesquite-Brazito Sewer Project
- IV. Motion to Adjourn

If you are an individual with a disability who is in need of a reader, amplifier, qualified sign language interpreter, or any other form of auxiliary aide or service to attend or participate in the hearing or meeting, please contact the LRGPWVA office at 575-233-5742, PO Box 2646, Anthony NM 88021 OR 215 Bryant St., Mesquite NM at least one week prior to the meeting or as soon as possible. Public documents, including the agenda and minutes, can be provided in various accessible formats. Please contact the LRGPWVA office if a summary or other type of accessible format is needed.

Si usted es una persona con una discapacidad que necesita un lector, amplificador, intérprete de lenguaje de signos o cualquier otra forma de ayudante auxiliar o servicio para asistir o participar en la audiencia o reunión, póngase en contacto con la oficina de LRGPWVA, 575-233-5742, PO Box 2646, Anthony, NM 88021 o 215 Bryant St., Mesquite, NM por lo menos una semana antes de la reunión o tan pronto como sea posible. Documentos públicos, incluyendo el orden del día y actas, pueden proporcionarse en diferentes formatos accesibles. Póngase en contacto con la oficina LRGPWVA si es necesario un resumen u otro tipo de formato accesible.

LOWER RIO GRANDE PUBLIC WATER WORKS AUTHORITY
Mesquite-Brazito Sewer Project RFP Committee Report
Tuesday, May 23, 2023 via Zoom

PROCESS:

The engineering/architectural agreement with Bohannon Huston, Inc. for the Mesquite-Brazito Sewer Project dated April 18, 2018 expired and a new RFP was issued on May 10, 2023 with a proposal deadline of 12:00 p.m. on May 22, 2023. One proposal from Bohannon Huston, Inc. was received by Projects Specialist Angie Meza before the deadline.

Projects Manager Karen Nichols reviewed the proposal to ensure it conformed with the requirements of the RFP and provided copies to the RFP Committee members. Board Chair Espy Holguin appointed Director James Cadena as her designee, Finance Manager Kathi Jackson appointed John Schroder, and Projects Manager Karen Nichols appointed Patty Chares. General Manager Martin Lopez and Operations Manager Mike Lopez participated in the committee meeting. Mr. Cadena had an appointment and was unable to attend the committee meeting.

COMMITTEE MEETING:

The RFP Committee met by Zoom and agreed by unanimous consent recommend the selection of Bohannon Huston, Inc. to continue as the engineering firm for the Mesquite-Brazito Sewer Project without scoring the proposal due to it being the only one received.

RECOMMENDATION:

The Committee recommends that the Board of Directors select Bohannon Huston, Inc. for the Mesquite-Brazito Sewer Project.

Karen Nichols, Projects Manager, Procurement Manager

Martin G. Lopez, General Manager

Mike Lopez, Operations Manager

John Schroder, Finance Manager's Designee

Patty Charles, Projects Manager's Designee

Absent

James Cadena, Board Chair's Designee

LOWER RIO GRANDE PUBLIC WATER WORKS AUTHORITY
Mesquite-Brazito Sewer Project RFP Committee Report
Tuesday, May 23, 2023 via Zoom

PROCESS:

The engineering/architectural agreement with Bohannon Huston, Inc. for the Mesquite-Brazito Sewer Project dated April 18, 2018 expired and a new RFP was issued on May 10, 2023 with a proposal deadline of 12:00 p.m. on May 22, 2023. One proposal from Bohannon Huston, Inc. was received by Projects Specialist Angie Meza before the deadline.

Projects Manager Karen Nichols reviewed the proposal to ensure it conformed with the requirements of the RFP and provided copies to the RFP Committee members. Board Chair Espy Holguin appointed Director James Cadena as her designee, Finance Manager Kathi Jackson appointed John Schroder, and Projects Manager Karen Nichols appointed Patty Chares. General Manager Martin Lopez and Operations Manager Mike Lopez participated in the committee meeting. Mr. Cadena had an appointment and was unable to attend the committee meeting.

COMMITTEE MEETING:

The RFP Committee met by Zoom and agreed by unanimous consent recommend the selection of Bohannon Huston, Inc. to continue as the engineering firm for the Mesquite-Brazito Sewer Project without scoring the proposal due to it being the only one received.

RECOMMENDATION:

The Committee recommends that the Board of Directors select Bohannon Huston, Inc. for the Mesquite-Brazito Sewer Project.

Karen Nichols, Projects Manager, Procurement Manager

Martin G. Lopez, General Manager

Mike Lopez, Operations Manager

John Schroder, Finance Manager's Designee

Patty Charles, Projects Manager's Designee

Absent

James Cadena, Board Chair's Designee

May 22, 2023

Lower Rio Grande Public Water Works Authority
521 St. Valentine
La Mesa, NM 88044

Re: [Mesquite-Brazito Sewer Project 2 RFP No. FY23-03](#) | [Project No. LRG-17-01](#)

Dear Ms. Nichols, Ms. Jackson, and the Selection Committee:

As we have said many times, the Lower Rio Grande Public Water Works Authority (LRGPWWA) and its relentless pursuit to provide reliable drinking water and wastewater services to communities in southern New Mexico is truly commendable. LRGPWWA has united independent communities into a forward-looking, cohesive group with a clear mission outlined for southern New Mexico's water and wastewater needs. Since 2009, Bohannon Huston has been proud to be a partner with the Authority in this pursuit and to help you deliver for your constituents and communities.

Some of our most recent work for LRGPWWA has included the latest work on the Mesquite-Brazito Sewer System. With our significant previous effort and detailed understanding of the direction and goals for the system, the BHI team is well-positioned and perfectly suited to start work on the Sewer Project 2. Our team—including Matt Thompson, Tyler Hopkins, and Diana Gomez—has made a significant professional and personal investment in serving your communities. Projects like Mesquite-Brazito Sewer Project 2 are ones that we are always motivated to continue working on. We take pride in seeing our projects through to completion, and we appreciate the opportunity to help LRGPWWA take this one across the finish line.

As you read through this proposal, you will find a summary description of our planning, design, and construction observation competence for the types of services that may be required under this contract, as well as résumés for our key personnel, past performance, familiarity with the LRGPWWA, and Bohannon Huston's unique suitability for this contract. We hope you will agree that our technical expertise and shared values make BHI the best partner to complete this work on the Mesquite-Brazito Sewer System. Thank you for your consideration, and please don't hesitate to reach out if you have any questions.

Sincerely,



Matthew Thompson, PE
Senior Vice President
Principal-in-Charge



Tyler Hopkins, PE
Vice President
Project Manager

TABLE OF CONTENTS

Table of Contents **ii**

Planning & Design Services **1**

- 1. Specialized Design and Technical Competence 1
 - Project History* 1
 - Project Approach* 2
- 2. Capacity and Capability 3
- 3. Past Record of Performance 6
- 4. Familiarity with the Contracting Agency 8
- 5. Work to be Done in New Mexico 8
- 6. Current Volume of Work 8

Construction Observation Services **9**

- 1. Construction Observation Experience 9
- 2. Start Up Assistance Experience 9
- 3. Capacity and Capability 9
- 4. Past Performance 9
- 5. History of Legal Claims 10

Forms **10**

PLANNING & DESIGN SERVICES

1. SPECIALIZED DESIGN AND TECHNICAL COMPETENCE

Project History

Bohannon Huston, Inc. has been working with the Association since 2015 to make your vision of the Mesquite-Brazito wastewater collection system a reality. BHI has utilized a full range of expertise and engineering services such as planning, survey, design, construction, right-of-way acquisition, and funding to ensure your goals are being achieved.

BHI worked closely with the Association during the planning stages to refine the overall project that would utilize traditional gravity collection in more areas to minimize the need for a pressurized system. While a 100% gravity collection system is preferred, we recognized it is not feasible in all areas of the project. It was agreed upon by BHI and the Association that those areas would be best served by a pressurized collection system. In some cases, additional forcemain piping needed to be installed to provide sewer service, and other areas were able to take advantage of an already planned forcemain. It was recognized during the planning stage that the funding amounts that had been acquired would not be sufficient to design and construct the full project. BHI worked with the Association to prioritize parts of the overall project to determine the most efficient use of the available funding. These prioritized areas were what was designed and constructed in the project known as Project 1 and provided sewer service to all residents along and in between Yucca Road and Missionary Ridge Road.

For the construction of Project 1, BHI utilized BHITracker™ to manage all aspects of construction administration. BHITracker™ played a significant role in the overall success of the project by providing a central hub for important documentation and correspondence between BHI, contractor, funding agency, and the Association. Having key personnel from all stakeholders informed with necessary information was critical to minimize change orders and delays. The utilization of BHITracker™ and having a full-time construction observer led to the project being completed as designed under budget. The unused contingency funds were able to be utilized to add additional improvements to the project.

BHI has continued to work with the Association on additional planning and design efforts to secure additional funding to continue building the Mesquite-Brazito wastewater collection system with what is known as Project 2. Since the planning and additional funding was secured there has been an unprecedented increase in construction costs that still continues today. It was expected that, due to elevated construction costs, all of Project 2 would not be able to be awarded for construction. In order to provide the Association with flexibility during the bidding process, the project was broken up into multiple bid lots. Similar to Project 1, the bid lots were analyzed to determine which ones could be awarded for construction to provide the most benefit with the funding that was available.



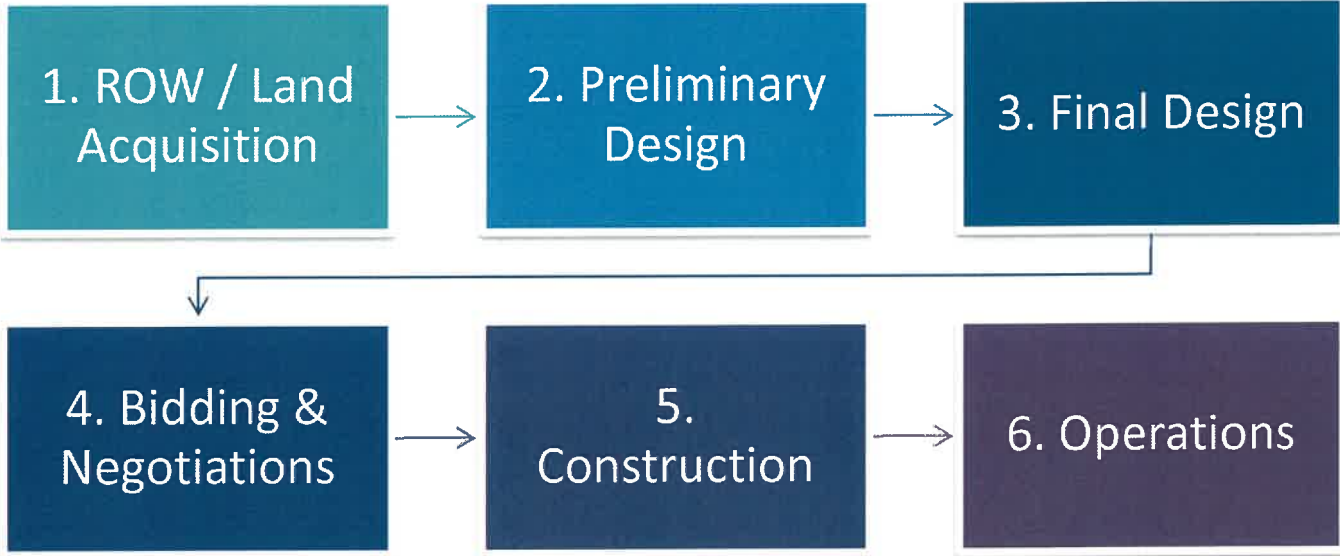
Project Approach

Sanitary sewer system infrastructure for wastewater collection is a significant area of expertise for the BHI team. Our Las Cruces office has built a major part of its practice on this type of work. Our clients have come to rely on us for our expertise, diligence, and innovative thinking in providing soundly engineered wastewater collection and treatment systems. BHI provides a full range of engineering services necessary for planning, design, construction, and monitoring/evaluation of public, private, institutional/commercial/industrial, and on-site wastewater systems. We are experts at applying federal, state, and local regulations regarding wastewater management. Our engineers have completed project planning aspects including wastewater flow and quality projections, rate structures, operations and administration, and permitting compliance. Our engineers are experienced in the design and construction of sanitary sewer system projects, including system rehabilitation and new collection and conveyance systems.

BHI will continue to manage the construction of Project 2 with similar methodologies from Project 1, ensuring that we keep stakeholders informed of project costs, conflicts, schedules, and public input to deliver the successful completion of construction for Project 2.

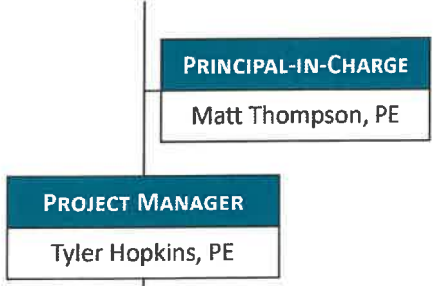
Our technical approach to this continuing phased project will be to assess the planning, design, and completed construction projects that have been completed to date. The assessment of the current designs and concepts will enable the confirmation of the pipeline alignments, grades, pump capacities, odor control, and force main sizing. The combination of these activities will enable us to reevaluate the feasibility of the chosen layouts based on previous work completed and make revisions to the layout as necessary.

Beyond the planning document confirmation above, we would move into the general engineering services, which would be completed in six phases:



2. CAPACITY AND CAPABILITY

BHI offers a robust team of professionals dedicated to completing our work on the Mesquite-Brazito system and to providing the same excellent service we've been delivering to the LRGPWVA for over two decades. This team is composed of professionals who have worked on the previous phases of this project and who have built strong relationships with LRGPWVA staff. The continuity of this team, combined with our local knowledge and comparable experience, means the LRGPWVA can be confident in the decision to choose BHI for this contract. We have included an organizational chart to the right with the names and roles of engineering staff who would be assigned to work on this contract.



Key Personnel:



SYSTEM ENGINEERING Josue Magaña, PE Jacob Smelser, EI Evan Fleischer, EI	PROJECT ADMINISTRATOR Diana Gomez, CAP
SURVEYING Dean Christmas, PS	CONSTRUCTION OBSERVATION Luis Mendez Eric Jimmie
ENVIRONMENTAL Epsilon System Solutions, Inc.	GEOTECHNICAL Coz Engineering

Matt Thompson, PE | Principal-in-Charge



As Principal-in-Charge, Matt will serve as a direct link between our team and yours, helping to ensure your expectations are being met and appropriate BHI resources are allocated to complete the project. Matt is a managing partner of our BHI Las Cruces office and is directly responsible for the work the office performs. He will hold the team accountable for project progress and will provide oversight to verify deliverables meet contract requirements. Matt has been a senior project manager

for many small and large water projects and has a long history of service with the LRGPWVA as well as many of the individual entities that have merged to form the Authority. Using that experience, he will work with our dedicated project manager and individual team members to support and to guide each distinct project phase, from initial project planning with funding and client goals, through quality design, and ultimately to construction completion.

Experience:
31 years total; 25 years with BHI

Registration:
Professional Engineer: NM #13868

Education:
BS Mechanical Engineering
BS Electrical Engineering

Tyler Hopkins, PE | Project Manager



As a project manager in our Las Cruces office, Tyler's primary responsibility is to lead the civil design teams, while still maintaining an active role in the design process implementation. Tyler ensures that projects are completed according to design requirements and finds effective solutions to clients' problems. He will serve in this capacity for this contract, helping to ensure that all areas of LRGPWVA projects meet the design standards and original schedules. Tyler will also manage all aspects of projects through the construction phase, addressing issues and adapting to situations as needed to keep projects on track.

Experience:
16 years total; 16 years with BHI

Registration:
Professional Engineer: NM #20677

Education:
BS Civil Engineering

He is well-versed in design knowledge of each element of water and wastewater infrastructure design, such as wells, storage tanks, booster stations, water treatment facilities, wastewater collection systems, and lift stations. Tyler's extensive experience includes managing LRGPWWA Mesquite-Brazito projects.

Diana Gomez, CAP | Project Administrator



As a project administrator, Diana is one of the Las Cruces office's primary interfaces between BHI and clients like LRGPWWA. She takes pride in maintaining ongoing and open communications with our clients to provide the necessary administrative expertise during their projects, from the initial scope development through final closeout. Diana is actively engaged throughout the complete project lifecycle and helps

efficiently move projects through the different stages. She provides contract negotiation support by helping prepare the scope of services, fee schedules, and general provisions for pending contracts, and she sets up and maintains the project schedule to support BHI project management staff.

Experience:
19 years total; 19 years with BHI

Registration:
Certified Administrative Professional (CAP):
NM #93941001

Education:
BS Computer Science
Certificate Project Management

Josue Magaña, PE | Engineering Lead



Josue's project experience includes designing wastewater treatment plant processes and equipment, collection lines, pump stations and controls, storage facilities, distribution systems, lift stations, and site development, including grading and drainage plans. His duties on these projects consist of developing construction drawings and exhibits; processing flow schematics; developing operations and maintenance manuals, material and equipment specifications, and cost estimates; completing

permitting applications; providing construction observation; and preparing preliminary engineering reports, master plans, and rate structure analyses. Josue's experience includes the LRGPWWA Mesquite-Brazito sewer project and the Wastewater Collection System. He is excited to help get your project ready for implementation.

Experience:
9 years total; 9 years with BHI

Registration:
Professional Engineer: NM #25644

Education:
BS Civil Engineering

Evan Fleischer, EI | System Design



Evan's experience includes infrastructure support facilities needing planning and design for power distribution, process controls, instrumentation, and SCADA. His responsibilities include designing medium- and low-voltage plant power distribution, process control system design, process network and SCADA design, building interior and site area lighting, construction administration and inspection, and facility commissioning.

Experience:
10 years total; 10 years with BHI

Registration:
Engineer Intern: NM #7109

Education:
BS Electronic and Computer Engineering
Technology

Jacob Smelser, EI | System Design



As a recent addition to BHI's Las Cruces office, Jacob supports water resources engineering projects by assisting team members and project managers on various projects. He applies engineering practices and principles and implements plans and designs using AutoCAD Civil 3D. Jacob's software experience also includes Siemens NX, Bluebeam Revu, AGTEK Earthwork Software, ProjectLibre, and Microsoft Office.

Experience:
2 years total; 2 years with BHI

Registration:
Engineer Intern: NM #7726

Education:
BS Civil Engineering

Dean Christmas, PS | Survey



As a Professional Surveyor in BHI's Las Cruces office, Dean leads field crews and assists other surveyors and project managers in a wide range of projects. He is responsible for overall survey phase project management and coordination of field survey data acquisition. He excels in topographic, construction staking, and cadastral surveying projects and supports photo control and geodetic surveying projects.

Experience:
11 years total; 9 years with BHI

Registration:
Professional Surveyor: NM #23788

Education:
BS Surveying Engineering

Subconsultants

The following subconsultants are among our most-trusted teaming partners, with whom we have worked on many projects in southern New Mexico.

Brad Beacham | Environmental | Epsilon Systems



Brad serves as Epsilon Systems's manager of its Environmental Program for New Mexico. His responsibilities include agency coordination and project management, as well as the completion of National Environmental Policy Act (NEPA), Natural Resources, and Cultural Resource surveys and documentation in compliance with the provisions of the National Historic Preservation Act, New Mexico Cultural Properties Act, Prehistoric and Historic Sites Preservation Act, and applicable

regulations. All are successfully completed in support of the development of municipal infrastructure throughout New Mexico.

Dan Cospoer, PE | Geotechnical | COZ Engineering

Dan has 20+ years of experience and provides geotechnical evaluation and reporting for projects, including transmission lines, structures, industrial, substations, solar plants, compressor stations, gas plants, highway, railroad siding track and arterial street design, and railroad and highway bridges. He has performed investigations for wastewater treatment plants, including foundation design for clarifiers, digesters, and embankments and has evaluated slopes and borrow areas. He has provided quality assurance testing and project management on municipal water storage tanks, retaining walls, lift stations, structures, highways, railroads, and bridges. He also provides and coordinates as-needed field technicians from drilling company resources.

3. PAST RECORD OF PERFORMANCE

Our work is about solving problems, turning challenges into solutions that fulfill the project requirements and meeting or exceeding client expectations. BHI staff have both the expertise and creativity to devise the right solutions, and we take advantage of a broad suite of technological tools to ensure that these solutions are created efficiently and accurately. Below, we have highlighted our approach to cost control, quality of work, and ability to meet schedules, as well as projects that showcase the range of expertise the BHI team will bring to LRGPWWA.

Cost Control: Our first rule of cost control is to ensure our team and the client establish a comfort factor with the scope of work defined for the project. Secondly, experts in each discipline outline the activities and develop the work hours required to complete the necessary deliverables for the project. These experts actually perform the duties and ensure quality-driven deliverables are produced with little oversight on the part of the client. A project management tracking sheet application is used to monitor work hour usage and costs. A history of past similar projects is used to negotiate the man-hours and control cost expenditures on design tasks.

Quality of Work: The BHI team's quality assurance and quality control philosophy focuses on eliminating the cause of failures before a step in the process is undertaken. This "total quality" approach means that every person, at every level of responsibility, is committed to total quality services at each step of the process. Each team member is technically knowledgeable and skillful in each task performed. Everyone understands how specific tasks relate to and affect overall project goals. Each team member has the necessary tools at their disposal to perform the task as accurately and effectively as possible. It is with this total quality management commitment that BHI manages its projects and communicates with the client team.

Ability to Meet Schedules: Our scheduling strategy includes milestones and scheduled inspections. In addition to our project team calls with the client, our internal BHI team will hold weekly meetings to discuss project status and to adjust staffing to meet project needs and schedules. Any changes impacting the project are communicated to the client and documented to ensure the schedule changes are agreed upon and known to all involved in the project.

Past Projects

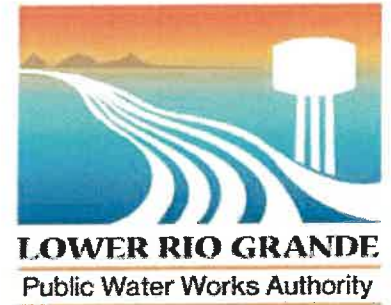
Mesquite-Brazito Wastewater Collection

BHI provided a number of services to LRGPWWA for this project, including planning, design, and construction. When BHI got involved, the initial planning for the project, in the form of a PER, had already been completed by another consulting firm. The PER was used by LRGPWWA to acquire funding primarily from USDA for the entire project. However, the PER did not satisfy the vision of what LRGPWWA wanted in the expansion of their wastewater collection system. BHI became involved and responsible for amending the original PER and moving forward with a design that would maximize the use of gravity sewer collection pipelines and minimize the use of individual residential grinder pump stations. As a result of the PER amendment, the funding that had been secured was not adequate to complete the entire project and needed to be broken into two phases. Throughout the design process, BHI was able to adapt to the changing needs of the client as additional areas to be served were added and designs had to be adjusted to meet requirements established by the permitting agencies. Communication and cooperation with the LRGPWWA and multiple government agencies, including USDA, NMDOT, NMED, EBID, and Dofia Ana County, were critical in producing a successful project.



LRGPWWA Small Project Support

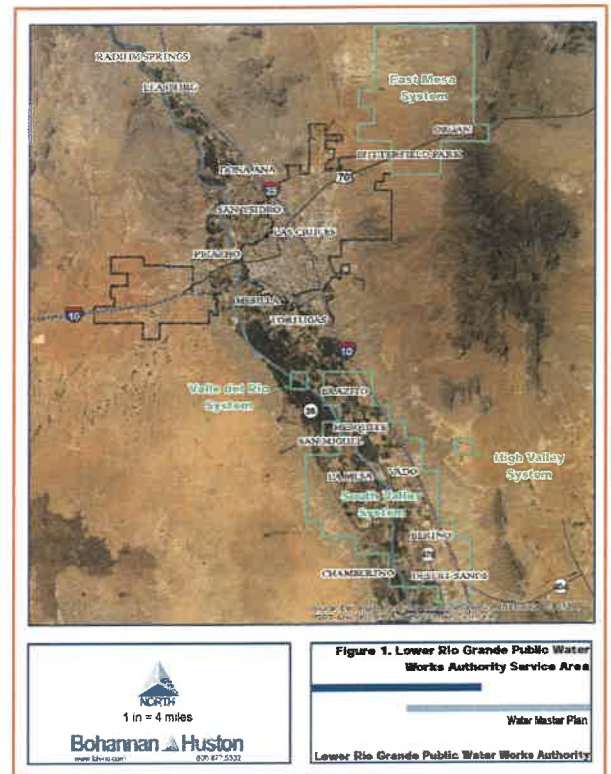
BHI has continued to support LRGPWWA with a variety of small engineering tasks that range from public land lease renewals, small repair designs, developer construction inspection, effluent discharge permit updates, to right-of-way acquisition. This on-call contract allows LRGPWWA staff to reach out and have BHI work on elements that need a rapid turnaround to support unanticipated work efforts that have arisen, whether it is an emergency or annual maintenance issues that arise. Having access to current GIS data and historical information allows BHI to move forward rapidly and not have to re-create background information.



LRGPWWA Water Master Plan

In 2017, LRGPWWA embarked on creating a Water Master Plan. This comprehensive plan addresses the Authority's water system needs over the next 20 years, following state and federal drinking water standards to ensure the health and stability of the water system for future generations. The plan's objective is to unify the independent water systems, simplify operations, reduce maintenance, and promote reliable access to drinking water for rural Southern New Mexico communities. BHI was selected to complete this Water Master Plan for LRGPWWA. BHI updated the inventory of current water utility system assets and conducted a water system evaluation through hydraulic modeling. BHI also analyzed future system demands for water supply, storage, and available flow for fire protection. A capital improvements plan was developed by BHI to focus on correcting existing system deficiencies, meeting projected future demands, and merging separate water systems to increase resiliency.

BHI was contracted, along with our partner CDM Smith, to design a new well, water storage tank, and arsenic treatment plant. To develop a design appropriate for the system, BHI created and analyzed a water model of the affected system area. Using the water model, the system was evaluated for potential water demands and fire-flow requirements in the area. These requirements were crucial to the design of flows from the well and arsenic treatment plant and storage capabilities of the new tank.



LRGPWWA South Valley Water Supply

BHI was part of a team that was contracted to design a new well, water storage tank, and arsenic treatment plant. To develop a design appropriate for the system, BHI created and analyzed a water model of the affected system area. Using the water model, the system was evaluated for potential water demands and fire-flow requirements in the area. These requirements were crucial to the design of flows from the well and arsenic treatment plant and storage capabilities of the new tank.

The new well is the planned re-drilling of existing Well #10 (LRG-07595), which is no longer capable of producing and historically has arsenic contamination levels above the mandated state and federal criteria. Replacement of the existing well was identified in order for the community system to have redundancy of supply and storage capable of providing fire flows. After pump testing and water modeling, the well was designed to produce 750 gpm to meet peak-flow demands and fire-flow storage requirements of the community.

An analysis was completed to assess water treatment technologies to reduce the arsenic below the state standard (10 ppb), enabling the selection of the most sustainable process for the community. A coagulation/pH adjustment system utilizing ferric chloride and anthracite media filter was selected as the most economical, both from an initial capital investment and an annual operating cost standpoint. The entire new treatment equipment is housed in a CMU block building to protect against the weather and vandalism and to allow proper equipment servicing.

On a separate existing property east of I-10, the new 250,000-gallon welded steel water storage tank is located adjacent to the existing water storage tank. Water storage for firefighting is available with the additional storage volume provided by the tank. The new tank adds redundancy to the system in the event one of the tanks is required to be offline for maintenance. The site around the tank will be re-graded to include a detention pond to meet state runoff standards for the site and to provide a location to drain one of the tanks if needed for maintenance.

4. FAMILIARITY WITH THE CONTRACTING AGENCY

With two decades of service to the LRGPWWA and its predecessor entities behind us, BHI has had the opportunity to build strong working relationships with much of the LRGPWWA's staff and has a well-established understanding of the LRGPWWA and several founding entities, such as Mesquite, Desert Sands, and La Mesa, as well as other nearby water associations. Being a native New Mexican firm with a **local office in Las Cruces**, we have a vested interest in improving our local communities, and we have worked hard to form long-term professional relationships with many water authorities, communities, municipalities, and counties throughout New Mexico. We have had the pleasure of working on various projects with LRGPWWA and the merged mutual domestics:

- LRGPWWA Organ WWTP Land Lease Renewal
- LRGPWWA Surface Water Treatment Facility
- LRGPWWA Mesquite-Brazito Wastewater Collection
- LRGPWWA Organ WWTP Lease Renewal
- LRGPWWA Berino Water Supply Final
- LRGPWWA Organ Discharge Permit
- LRGPWWA Water Master Plan
- LRGPWWA Hwy 70 Bore Repair
- LRGPWWA Vado NMSLO Permit
- LRGPWWA South Valley Water Supply
- LRGPWWA Berry Patch Waterline Construction Svcs
- LRGPWWA Mesquite Wetlands Closure
- LRGPWWA Moongate Water Boundary Map
- Desert Sands MDWCA Water System Improvements
- Desert Sands MDWCA Water System Phase II & III
- Mesquite Mutual Water Association Water System
- Mountain View W&SA Funding Assistance
- Mountain View W&SA Water System Improvements
- Mountain View W&SA Moongate/Rincon Loop
- Mountain View W&SA Combined 4-Yr Water Plan
- Mountain View W&SA Connection 2000
- Desert Sands MDWCA Water Studies
- Organ W&SA Organ NMED Discharge Permit Renewal
- Organ W&SA Water Litigation Support
- Organ W&SA Water and Wastewater Improvements
- Organ W&SA Water & Sanitary Sewer Improvements
- Organ W&SA Combined 40-Yr Water Plan
- Rincon Water Consumers Co-Op Water System
- Rincon Water Consumers Co-Op Water Tank Coating
- Rincon Water Consumers Co-Op Technical Assistance
- Alto de Las Flores MDWCA Water Improvements
- Alto de Las Flores MDWCA Water System Improvements
- Alto de Las Flores MDWCA Discharge Flow Credit Plan
- Butterfield Park Water System Improvements
- Butterfield Park Combined 40-Yr Water Plan
- Butterfield Park Connection 2000

5. WORK TO BE DONE IN NEW MEXICO

Not applicable

6. CURRENT VOLUME OF WORK

Our current work with LRGPWWA includes the following projects that are less than 75% complete, all of which are just recently underway: Water Asset Management Plan, Wastewater Asset Management Plan, Mesquite Lift Stations Evaluation, and BLM 097789 ROW Permit Renewal.

CONSTRUCTION OBSERVATION SERVICES

1. CONSTRUCTION OBSERVATION EXPERIENCE

BHI provides construction phase services, ranging from periodic site visits to full construction management and inspection. We will work closely with LRGPWVA to provide the required level of construction administration and inspection services to meet your individual project needs. During construction, we can represent LRGPWVA, as needed, with contractor issues and with any necessary coordination with outside agencies.

2. START-UP ASSISTANCE EXPERIENCE

BHI offers services starting at the planning stages and continuing all the way through construction inspection and acceptance. Start-up assistance generally applies to more complex projects that become operational, like a wastewater treatment facility improvement. BHI will assist LRGPWVA in specifying start-up requirements and functional demonstration testing for systems that must be verified in an operational sense. We will prepare operations and maintenance manuals and provide performance evaluation monitoring during the warranty period as requested.

3. CAPACITY AND CAPABILITY

Our team has an excellent record of providing timely services that help keep our clients' projects on track. Our inspectors are trained to ensure projects under their watch are constructed in strict compliance with the contract documents. We ensure that the design team engaged throughout the entire project lifecycle. Oftentimes, this entails having an engineer in the field during construction to verify the project is progressing on schedule and the design intent is being met and to work closely with our construction observers to ensure a quality product is being constructed. This is another prime example of how BHI supports our clients from concept to completion.

Luis Mendez | Construction Observation



Luis has been working at BHI for more than 20 years and has developed a multi-disciplined knowledge of our projects. He has worked in our Structures, Community Development and Planning, Construction Inspection, and Roadway and Traffic engineering departments, providing design support as a drafting professional. He has been working in our Las Cruces office for the last several years, providing full project support on a variety of water and wastewater projects. This has included applying his 2 decades of experience to providing construction observation services on several project, including for the previous work on Mesquite-Brazito.

4. PAST PERFORMANCE

BHI has a strong history of delivering projects that meet our clients' budgets and schedules for design and construction. Highlighted recent projects are included below:

<i>Project Title</i>	<i>Bid Price</i>	<i>Final Cost</i>
Mesquite-Brazito Wastewater Collection	\$6,231,976	\$6,733,557
BHI provided planning, design, and construction support for this project. BHI was responsible for amending the original PER and moving forward with a design that would maximize the use of gravity sewer collection pipelines and minimize the use of individual residential grinder pump stations.		
Mesquite Wetlands Closure	\$79,777	\$162,667
BHI coordinated the final steps to complete the Wetlands Closure Plan. This project encountered four change orders: (1) Hauling of stockpiled soil material; (2) Reconcile overruns and underruns; (3) Additional work including		

mobilization/demobilization, berm relocation, basecourse access road, and reseeding; and (4) Additional contract time and reseeding cost reduction.		
Alto de las Flores Water System Improvement	\$2,913,385	\$2,874,724
BHI designed water system improvements for Alto De Las Flores Mutual Domestic Water Consumers Association, and provided bidding, construction administration, and construction inspection services. This project replaced more than 16,000 linear feet of water distribution piping and more than 160 residential water meters.		

5. HISTORY OF LEGAL CLAIMS

BHI has no significant history of claims on projects. We strive to have all our projects completed with few problems, and only ones that are easily resolved. This is primarily achieved by working as a team with the owner and construction contractors and by proper and regular quality controls during the design phase. Good design, strong communication, and effective construction inspection services go a long way toward avoiding claims during construction and in the future. When a claim is made because we, or one of our subconsultants, have made mistakes or overlooked an element in the design, we accept responsibility for our mistakes and gladly work to correct the problem to our client's satisfaction as quickly as possible.

Claims Avoidance Approach

In an effort to avoid claims being made against a project, BHI provides and monitors a multitude of tasks. During the design phase of a project, a constructability review of the project is conducted to ensure that the information provided in the drawings is workable, accurate, and complete.

The most effective way to avoid a construction claim is by proper field documentation. BHI's inspectors use a standardized Daily Field Report with photo documentation. The field report includes the project name, location, date, weather conditions and temperature, size of work force, subcontractors on site, visitors on site, equipment on site, materials delivered to the site, and work hours. In addition, the inspector documents the type of work in progress by location, instructions given to the contractor or testing lab, and problems or issues encountered and how they were resolved. All non-compliance items are addressed verbally and followed up with a written e-mail, speed letter, or a formal letter to the contractor's project manager. Efforts are made to ensure that the Daily Field Report is a complete, stand-alone document.

In addition to on-site inspection and construction oversight, we believe strongly in the continued involvement of our designers during the construction process. To minimize the number of construction change orders or claims, it is of the utmost importance to have the designer available to answer requests for information and provide critical information to the contractor and inspectors regarding design intent and criteria.

Construction Observation Philosophy

BHI has a long history of construction observation for our clients in the private, municipal, county, state, and federal sectors. Our observers are highly skilled and experienced in the areas of documentation and reporting requirements based on construction plans and contract documents. Our observers hold the contractors to the strictest compliance with the contract document, plans, and specifications. Additionally, our observers are tasked to:

- Provide resident engineers/observers, during the time the construction is in progress, time to observe the work of the contractor to reasonably ensure the project is being constructed in compliance with the plans and specifications
- Check manufacturers' shop drawings of equipment and/or materials proposed for use by the contractor
- Coordinate testing services required for the project
- Make periodic inspections and observations of the work in progress in conjunction with LRGPPWA representatives as necessary

FORMS

CAMPAIGN CONTRIBUTION DISCLOSURE FORM

Pursuant to the Procurement Code, Sections 13-1-28, et seq., NMSA 1978 and NMSA 1978, § 13-1-191.1 (2006), as amended by Laws of 2007, Chapter 234, any prospective contractor seeking to enter into a contract with any state agency or local public body **for professional services, a design and build project delivery system, or the design and installation of measures the primary purpose of which is to conserve natural resources** must file this form with that state agency or local public body. This form must be filed even if the contract qualifies as a small purchase or a sole source contract. The prospective contractor must disclose whether they, a family member or a representative of the prospective contractor has made a campaign contribution to an applicable public official of the state or a local public body during the two years prior to the date on which the contractor submits a proposal or, in the case of a sole source or small purchase contract, the two years prior to the date the contractor signs the contract, if the aggregate total of contributions given by the prospective contractor, a family member or a representative of the prospective contractor to the public official exceeds two hundred and fifty dollars (\$250) over the two year period.

Furthermore, the state agency or local public body may cancel a solicitation or proposed award for a proposed contract pursuant to Section 13-1-181 NMSA 1978 or a contract that is executed may be ratified or terminated pursuant to Section 13-1-182 NMSA 1978 of the Procurement Code if: 1) a prospective contractor, a family member of the prospective contractor, or a representative of the prospective contractor gives a campaign contribution or other thing of value to an applicable public official or the applicable public official's employees during the pendency of the procurement process or 2) a prospective contractor fails to submit a fully completed disclosure statement pursuant to the law.

The state agency or local public body that procures the services or items of tangible personal property shall indicate on the form the name or names of every applicable public official, if any, for which disclosure is required by a prospective contractor.

THIS FORM MUST BE INCLUDED IN THE REQUEST FOR PROPOSALS AND MUST BE FILED BY ANY PROSPECTIVE CONTRACTOR WHETHER OR NOT THEY, THEIR FAMILY MEMBER, OR THEIR REPRESENTATIVE HAS MADE ANY CONTRIBUTIONS SUBJECT TO DISCLOSURE.

The following definitions apply:

"Applicable public official" means a person elected to an office or a person appointed to complete a term of an elected office, who has the authority to award or influence the award of the contract for which the prospective contractor is submitting a competitive sealed proposal or who has the authority to negotiate a sole source or small purchase contract that may be awarded without submission of a sealed competitive proposal.

"Campaign Contribution" means a gift, subscription, loan, advance or deposit of money or other thing of value, including the estimated value of an in-kind contribution, that is made to or received by an applicable public official or any person authorized to raise, collect or expend contributions on that official's behalf for the purpose of electing the official to statewide or local office. "Campaign Contribution" includes the payment of a debt incurred in an election campaign, but does not include the value of services provided without compensation or unreimbursed travel or other personal expenses of individuals who volunteer a portion or all of their time on behalf of a candidate or political committee, nor does it include the administrative or solicitation expenses of a political committee that are paid by an organization that sponsors the committee.

"Family member" means spouse, father, mother, child, father-in-law, mother-in-law, daughter-in-law or son-in-law of (a) a prospective contractor, if the prospective contractor is a natural person; or (b) an owner of a prospective contractor.

"Pendency of the procurement process" means the time period commencing with the public notice of the request for proposals and ending with the award of the contract or the cancellation of the request for proposals.

"Prospective contractor" means a person or business that is subject to the competitive sealed proposal process set forth in the Procurement Code or is not required to submit a competitive sealed proposal because that person or business qualifies for a sole source or a small purchase contract.

"Representative of a prospective contractor" means an officer or director of a corporation, a member or manager of a limited liability corporation, a partner of a partnership or a trustee of a trust of the prospective contractor.

Name(s) of Applicable Public Official(s) if any:
Esperanza "Espy" Holquin, Furman "Smitty" Smith, Glory Juarez, Paul Smith, James Cadena

DISCLOSURE OF CONTRIBUTIONS BY PROSPECTIVE CONTRACTOR:

Contribution Made By: _____
Relation to Prospective Contractor: _____
Date Contribution(s) Made: _____
Amount(s) of Contribution(s) _____
Nature of Contribution(s) _____
Purpose of Contribution(s) _____
(Attach extra pages if necessary)

Signature Date

Title (position)

—OR—

NO CONTRIBUTIONS IN THE AGGREGATE TOTAL OVER TWO HUNDRED FIFTY DOLLARS (\$250) WERE MADE to an applicable public official by me, a family member or representative.



Signature Date

May 19, 2023

Senior Vice President

Title (Position)